



The Institution of Occupational Safety & Health (IOSH) is a leading body for HSE professionals. IOSH has developed series of specially designed certificate programmes to promote protection from workplace hazards. This is one of the fundamental safety courses to provide strong foundation to manage and implement best practices in the industry. It also aids to understand, achieve, maintain and follow the safe system of work in protecting the organisation under moral, economical and legal aspects.

Who can take IOSH MS?

- Managers and supervisors of any sector working across the globe
- Professionals involved in job to HSE
- People who aim to enter into safety as a career

Course Syllabus:

- Introducing managing safely
- Assessing risks
- Controlling risks
- Understanding responsibilities
- Understanding hazards
- Investigating incidents
- Measuring Performance

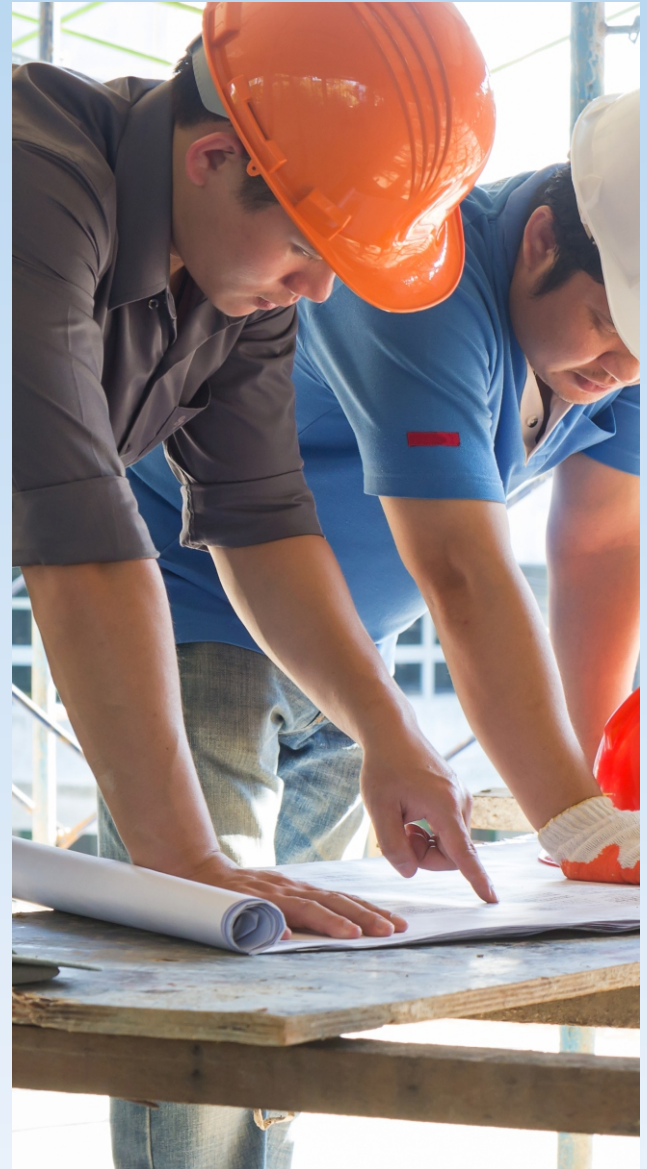
Course Benefits:

- Set achievable Health & Safety objectives
- Active participation to improve organisation Health & Safety standards
- Able to assess hazards, calculate the risks and propose adequate control measures in the workplace
- Understanding the responsibilities of Health & Safety professional
- Can take part in accident investigation
- Able to measure the performance
- Successful delegates holds internationally recognized certification

Assessment:

- Multi format assessment for 60 marks
- Risk assessment project for 38 marks

Course Duration: 3 days



Course Fee & Calendar:

E-mail: info@nistinstitute.com
www.nistinstitute.com
Contact NIST @ 1800 103 2442